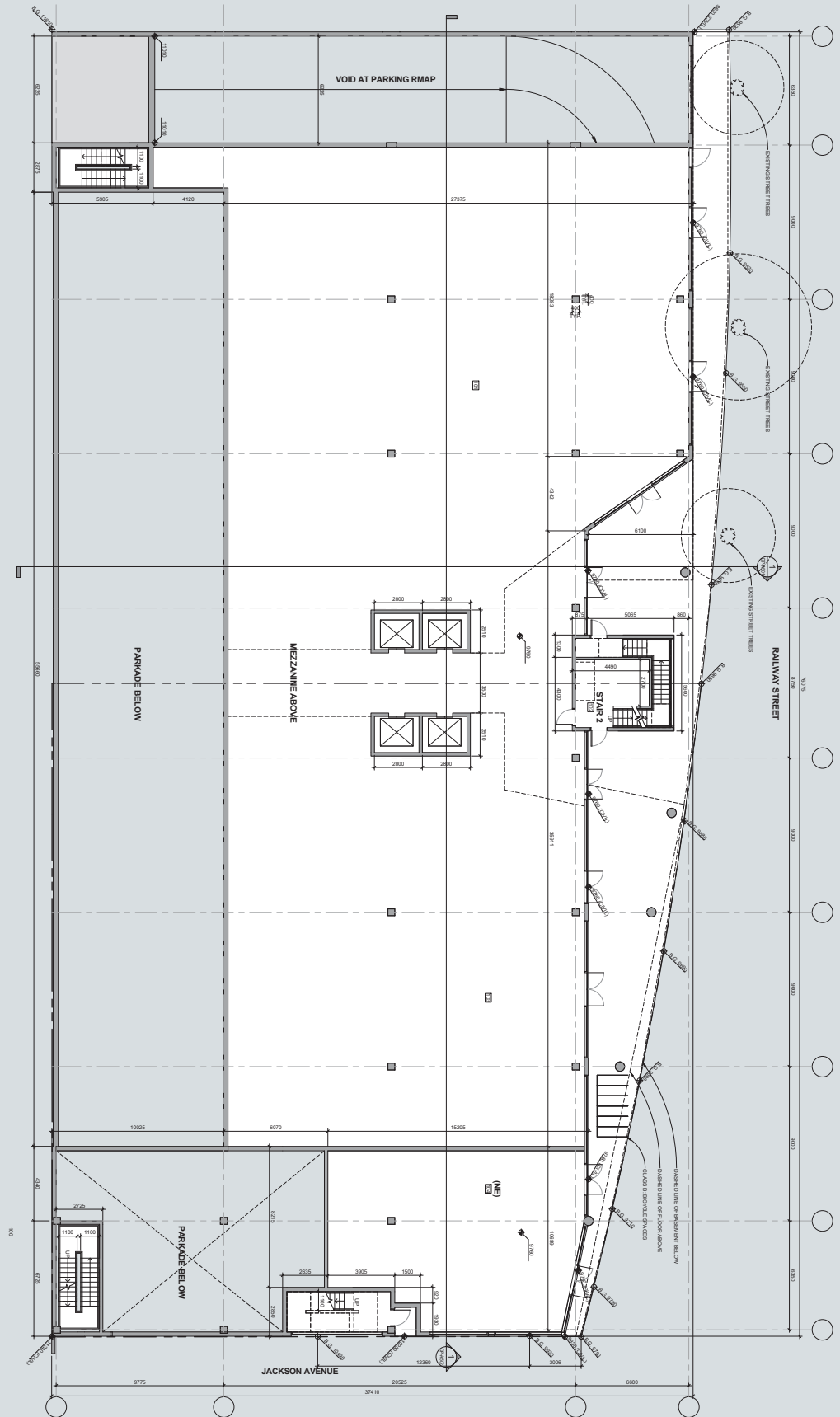
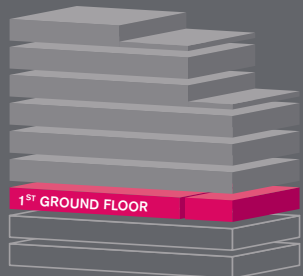


IN RAILTOWN



GROUND FLOORPLATE
17,037 SF



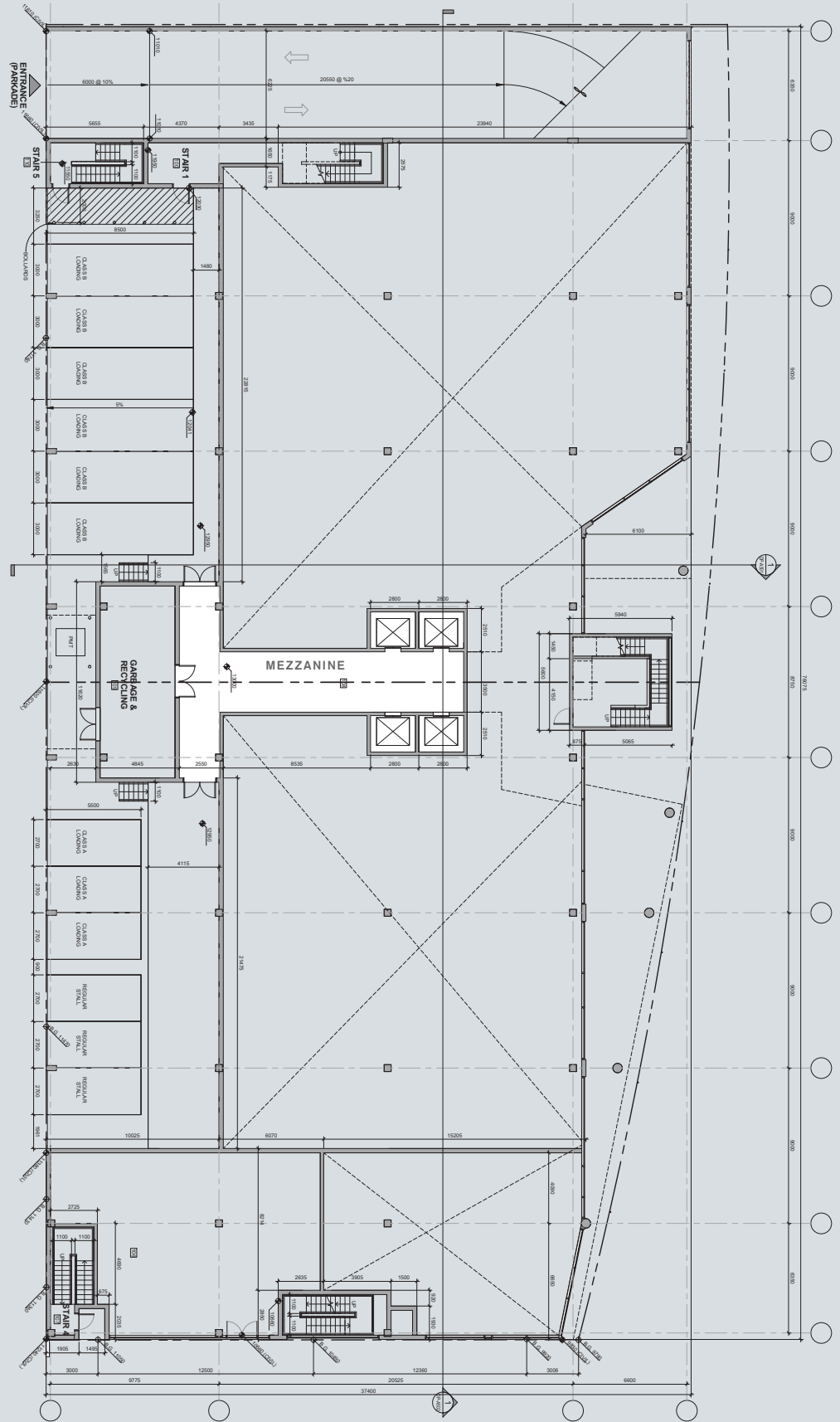
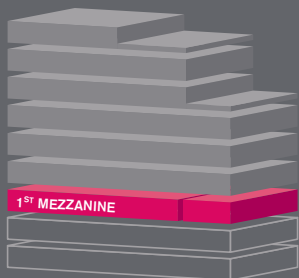
All measurements are approximate and variations from the plan may apply;
shape and configuration of balconies, doors, windows and ducts may differ from those illustrated.



IN RAILTOWN



MEZZANINE
FLOORPLATE
4,179 SF



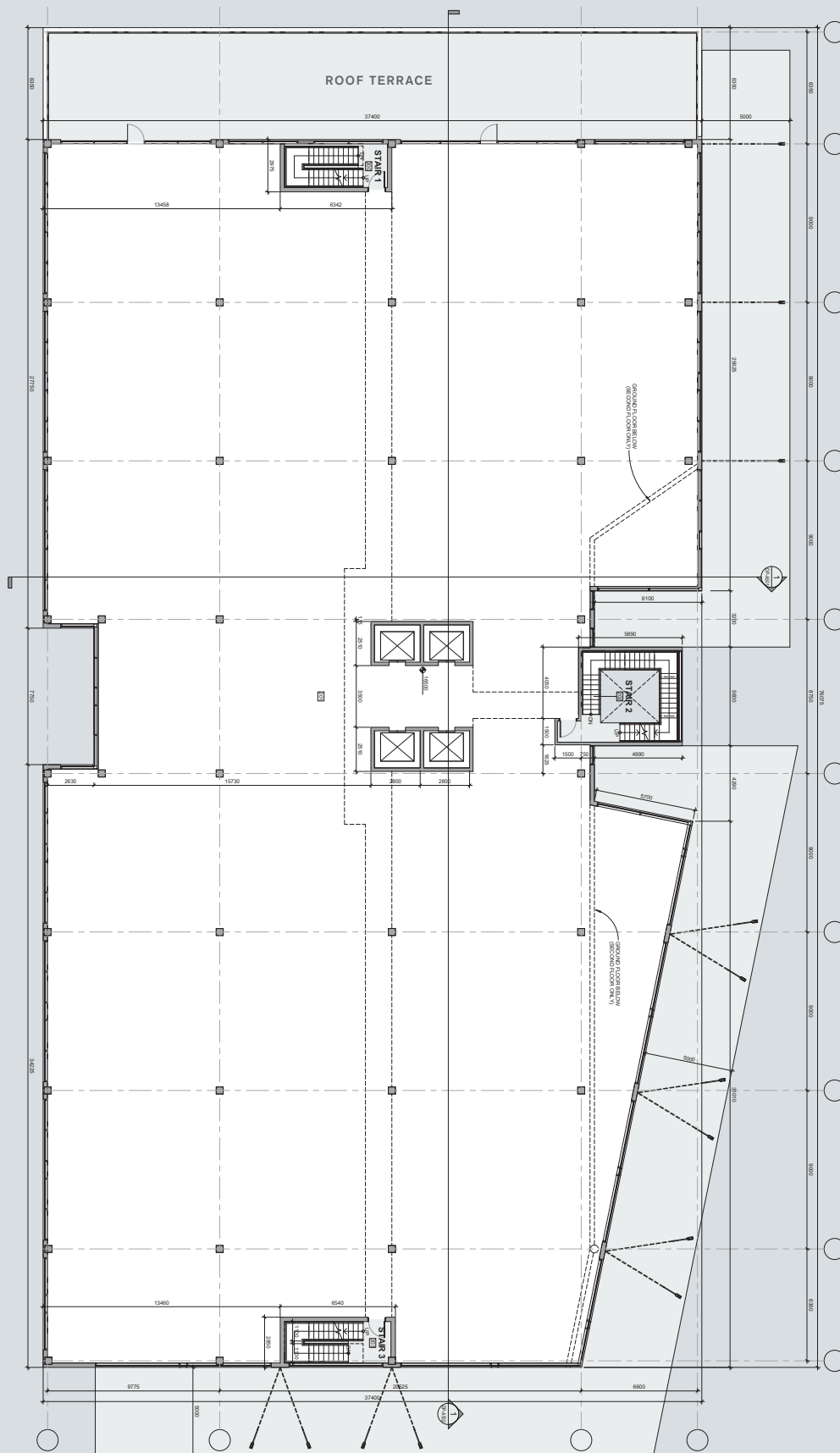
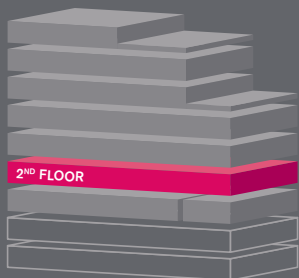
All measurements are approximate and variations from the plan may apply;
shape and configuration of balconies, doors, windows and ducts may differ from those illustrated.



IN RAILTOWN



2ND FLOORPLATE
26,083 SF



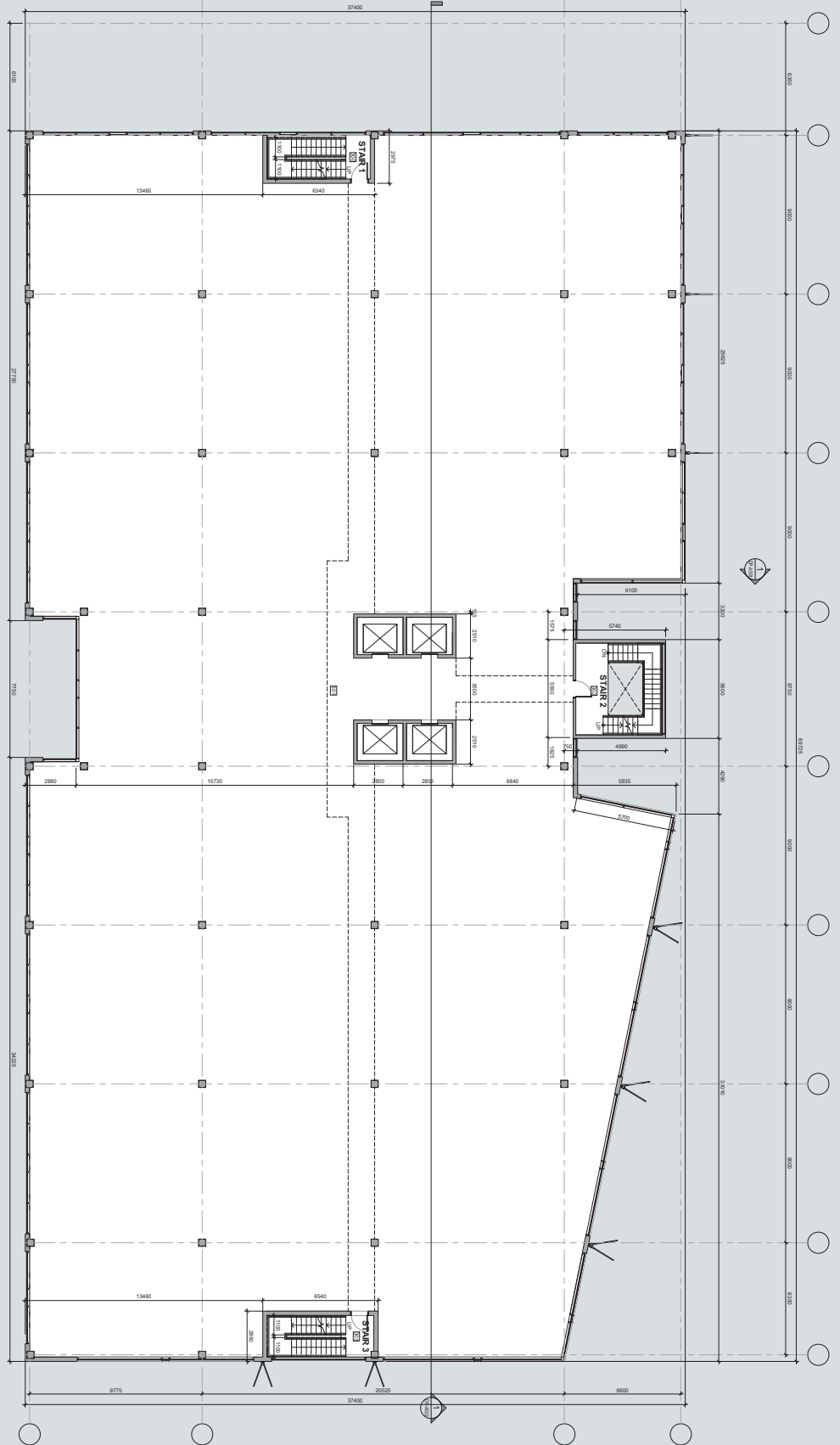
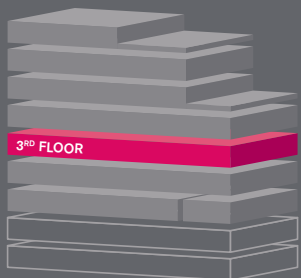
All measurements are approximate and variations from the plan may apply;
shape and configuration of balconies, doors, windows and ducts may differ from those illustrated.



IN RAILTOWN



3RD FLOORPLATE
26,083 SF



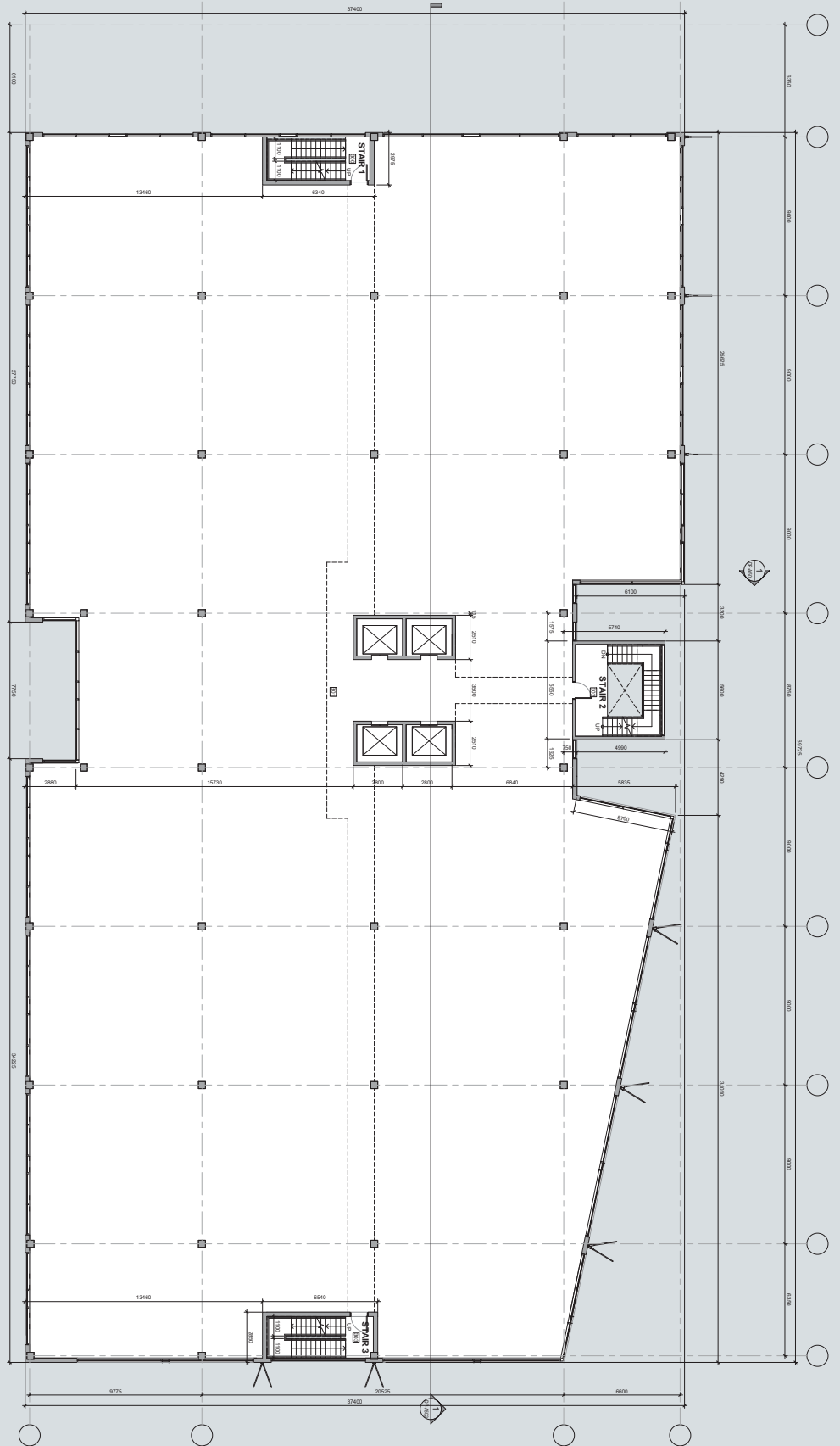
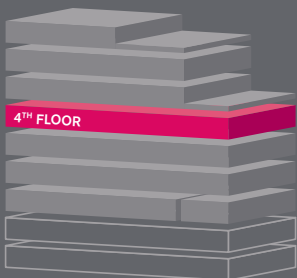
All measurements are approximate and variations from the plan may apply;
shape and configuration of balconies, doors, windows and ducts may differ from those illustrated.



IN RAILTOWN



4TH FLOORPLATE
26,083 SF



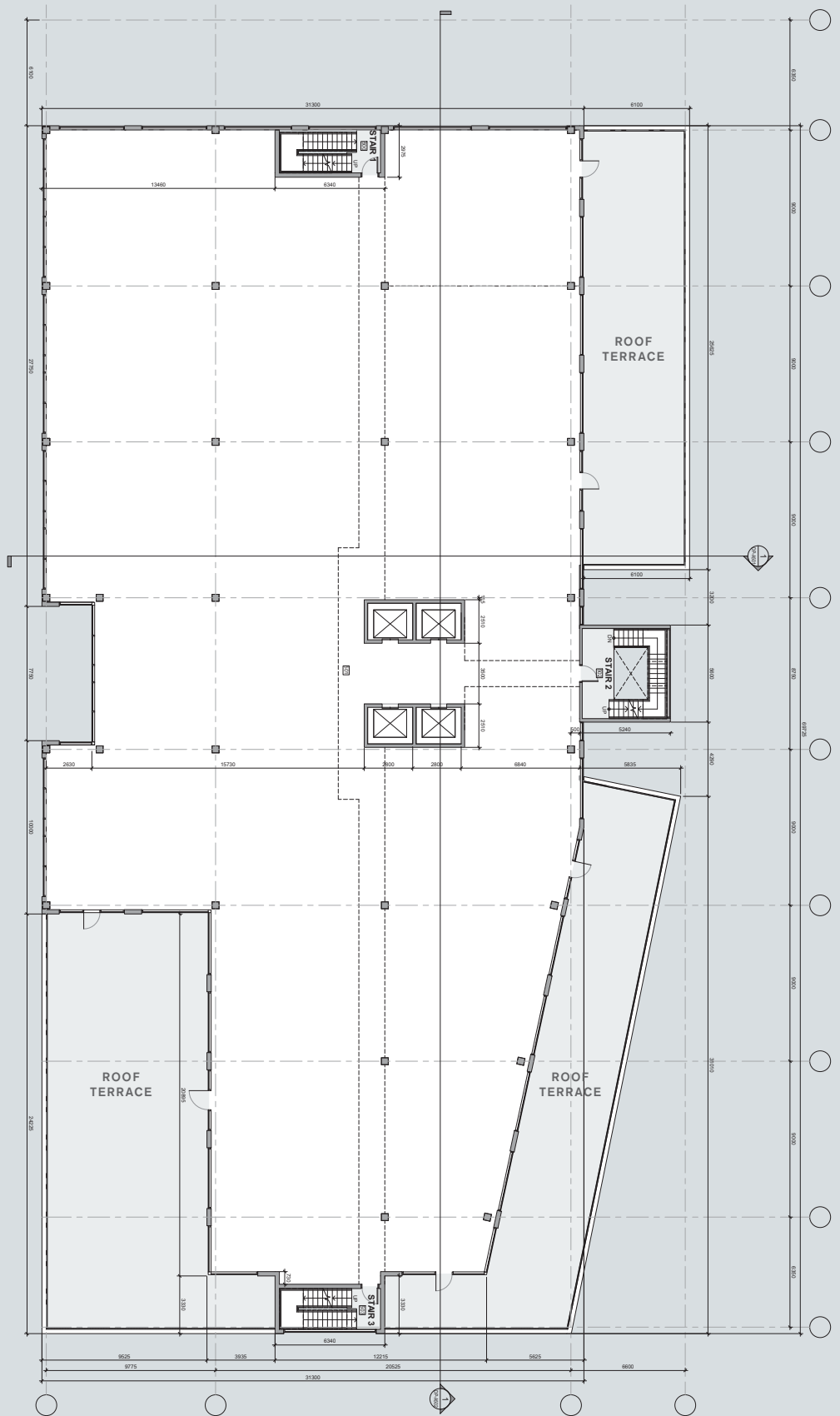
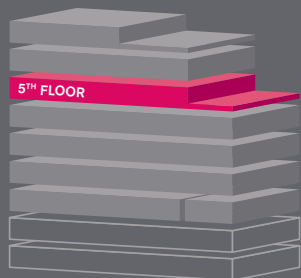
All measurements are approximate and variations from the plan may apply;
shape and configuration of balconies, doors, windows and ducts may differ from those illustrated.



IN RAILTOWN



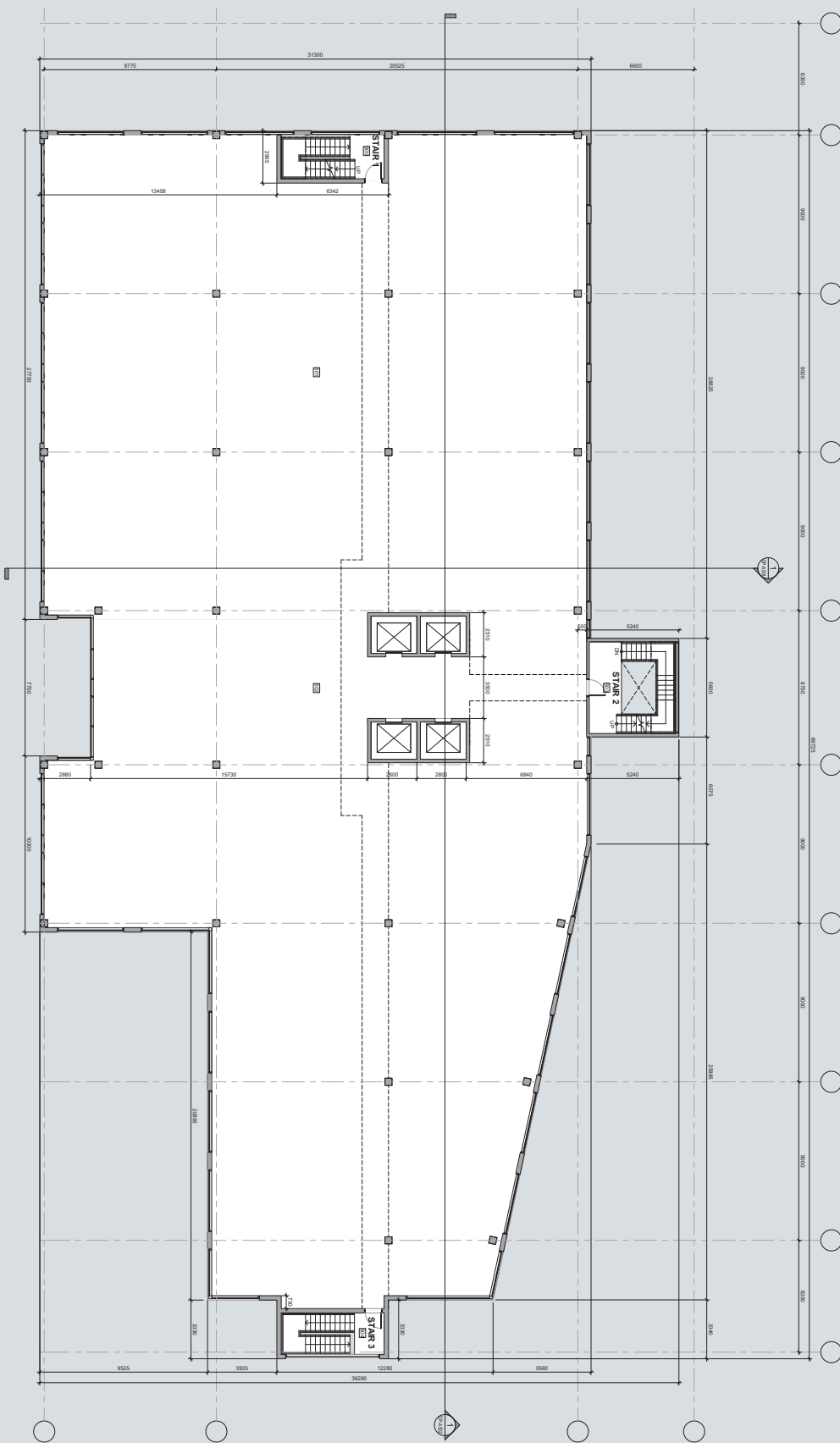
5TH FLOORPLATE
19,713 SF



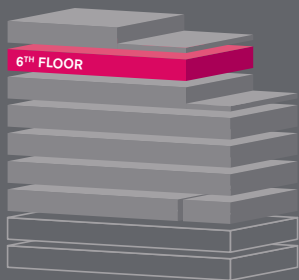
All measurements are approximate and variations from the plan may apply;
shape and configuration of balconies, doors, windows and ducts may differ from those illustrated.



IN RAILTOWN



6TH FLOORPLATE
19,746 SF



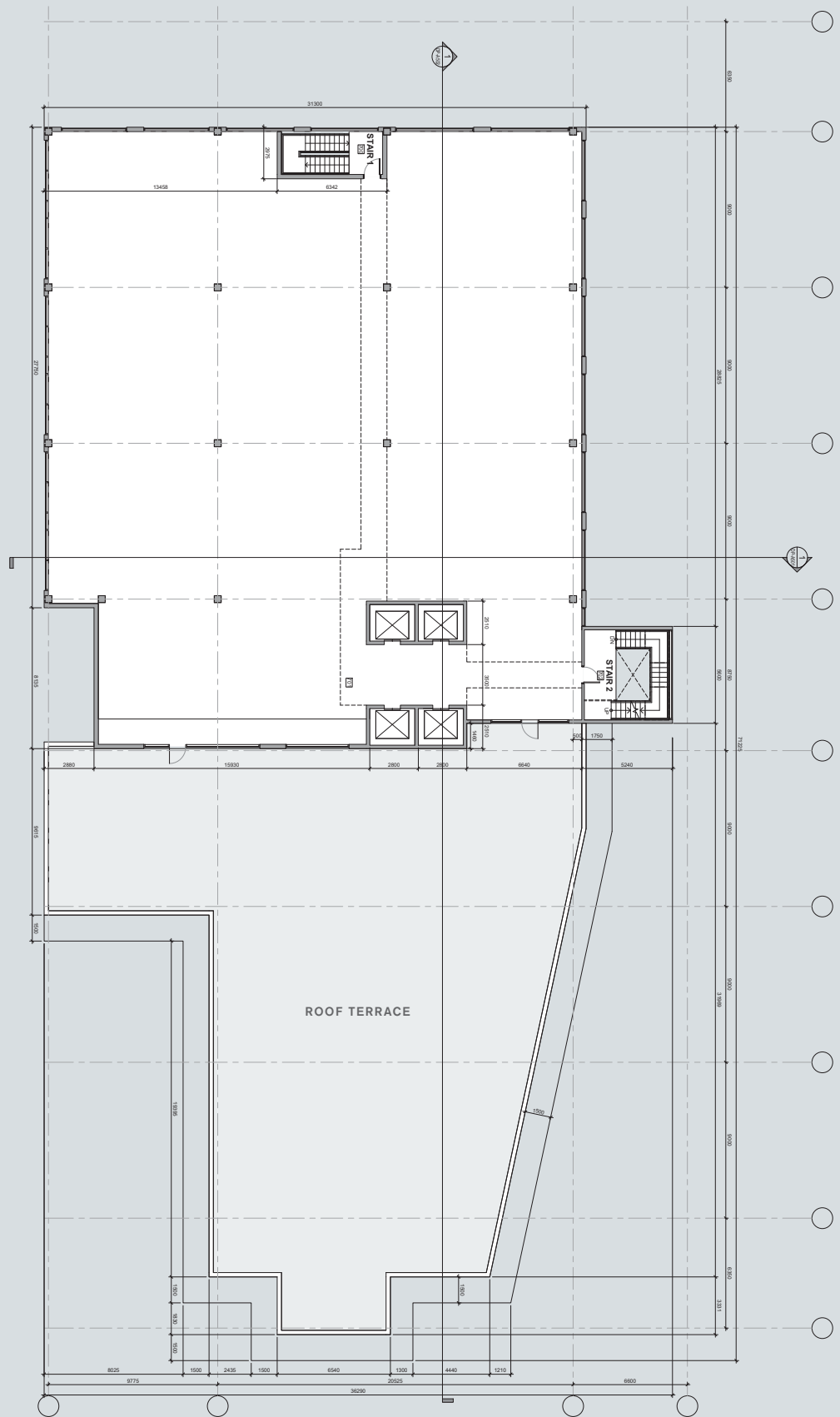
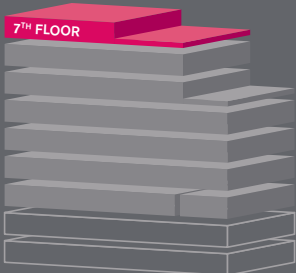
All measurements are approximate and variations from the plan may apply; shape and configuration of balconies, doors, windows and ducts may differ from those illustrated.



IN RAILTOWN



7TH FLOORPLATE
12,036 SF



All measurements are approximate and variations from the plan may apply;
shape and configuration of balconies, doors, windows and ducts may differ from those illustrated.

